

mindo 119

Reference no.
30075, 30075D1

Product

The mindo 119 dining chair represents the ideal garden chair, comfortable, stackable, and easy to maintain due to the choice of materials. The untreated teak will take on a silver-grey patina over time, ensuring that the chair will never lose its classic look. The gently contoured seat and back slats offer great comfort as do the armrests. The teak can be individually replaced in case of mishap, meaning that this chair can be a lifelong companion.

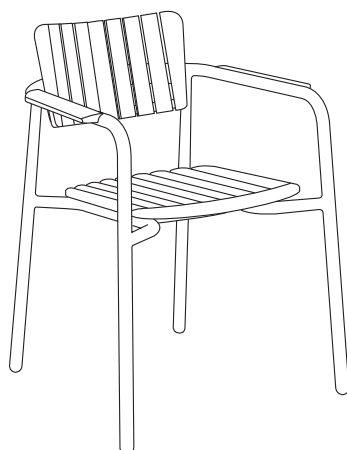
Designed by

Thomas is a Danish designer with a design studio in the heart of Copenhagen. Central to Thomas' design philosophy is the interaction between a product and its user, his creative process always starts with an understanding of the user's needs. Thomas shares mindo's meticulous attention to detail and materials that are the responsible choice in terms of sustainability and longevity.

"Simple things take time is something I've learned from experience. With this chair, I am trying to combine classic lines with a modern twist. Details like the armrest give the chair its uniqueness."

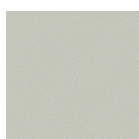


Dimensions

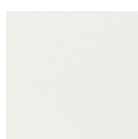


Dining Chair
Width: 60,0 cm / 23.6"
Depth: 56,2 cm / 22.1"
Height: 79,0 cm / 31.1"
Seat height: 45,0 cm / 17.7"

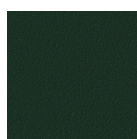
Colours



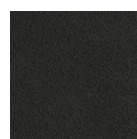
ALU FRAME:
Light Grey 010



ALU FRAME:
Off-white 012



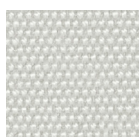
ALU FRAME:
Dark Green 014



ALU FRAME:
Dark Grey 070



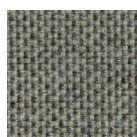
WOOD:
Teak



CUSHION:
Sunbrella Silver
Grey
(optional)



CUSHION:
Sunbrella Sooty
(optional)



CUSHION:
Sunbrella Carbon
(optional)

Links

[Mindo 119 Collection: Lifestyle & product images](#)

www.mindo.com



mindo 119

Reference no.
30075, 30075D1

Materials

Powder-coated aluminium
Teak
Fabric (Sunbrella)

Care & Maintenance

ALUMINIUM is a lightweight, yet strong and durable material and ideal for outdoor furniture due to its resistance to corrosion. All our aluminium undergoes a high-quality, solvent-free powder coating for extra protection before being processed. If the coating is damaged due to dents or scratching, moisture can invade and eventually damage the aluminium. Regularly remove dirt with a sponge or soft brush, lukewarm water, and a mild dishwashing detergent. Never use solvents. Thoroughly rinse with clean, fresh water after cleaning to remove all soap and dirt residue.

TEAK is a hardwood well suited for outdoor use, whether oiled or left untreated. All the teak used has not been treated and will acquire a grey patina over time. If the warm look of the teak is to be maintained, oiling with a suitable teak oil will be necessary before taking the furniture into use. The frequency required for such treatment depends on the climate the furniture is exposed to. Teak is a natural material; therefore, minor cracks and slight warping of the slats may be expected and are not a sign of inferior quality. Teak is easy to maintain as daily cleaning is simply brushing off loose dirt. Spills should be taken quickly, especially if the teak has not been treated. A mild dishwashing detergent and a soft brush or sponge in the direction of the grain will usually suffice. Always rinse the area well to remove any soap residue. Tougher stains might require light sanding. If treated previously, the treatment must be repeated after sanding the area. The teak slats can be removed and individually replaced if necessary.

The **FABRIC (SUNBRELLA)** is made from high-quality, 100% solution-dyed acrylic fibers produced in France. Sunbrella is designed for outdoor use and comes with a repellent surface that is hydrophobic and delays the adhesion of stains and dirt. This effect will decrease over time depending on the climatic impact. Clean with a soft bristle brush and lukewarm water/mild soapy water. Air drying is recommended to prevent mildew. We propose cleaning the cushions regularly depending on the climate; stains and dirt should be removed swiftly after they are discovered. Do not steam-iron the fabric; only use a dry iron on the lowest temperature setting, e.g., through a cloth. It is advisable to test a small area first.

Storage

The mindo 119 dining chair can be left outside during the entire summer season. During the off-season, we recommend storing the furniture in a dry and ventilated place, like a covered patio or similar. Alternatively, store the furniture under a furniture cover. A cover should be placed in such a manner that it is kept slightly away from the furniture to minimise condensation and allow for free air circulation. Condensation forming under the cover during storage, as well as furniture or cushions that were damp before storage, can cause mould and mildew. Therefore it is vital that the furniture as well as any cushions are completely dry before storage. Checking the stored furniture regularly and letting moisture escape by lifting the cover on dry days is helpful. We recommend storing any loose cushions upright or in a slanted position for maximum air circulation. Placing them with their backside up will protect the more visible parts if staining should occur.

Cover

mindo 119 dining chairs can be placed with a dining table and covered with a corresponding cover, depending on the size of the table.