



## mindo 101 Chairs

Reference no.  
30017, 101017, 30054, 101054

### Product

The mindo 101 chairs offers both a dining and a lounge chair in a similar sleek, modern style paired with high comfort, setting the scene for special moments with family and friends. The woven backrest of the chairs ensures comfortable seating in various positions, making even long dinners a joyful affair. The seats of both the dining and the lounge chair are made of untreated teak slats, where their slight curvature provides excellent comfort. Either chair is available in either Light Grey or Dark Grey. To complement either the dining or the lounge chair, add a comfortable cushion in either colour Sooty or colour Carbon.

### Designed by

Thomas is a Danish designer with a design studio in the heart of Copenhagen. Central to Thomas' design philosophy is the interaction between a product and its user, his creative process always starts with an understanding of the user's needs. Thomas shares mindo's meticulous attention to detail and materials that are the responsible choice in terms of sustainability and longevity.

"The mindo 101 chair is the outcome of an ambitious dream; countless design adaptations were made to what may seem like small details, where mindo and I challenged one another in a creative and constructive process, with a lot of hard work on all parts, not least of the talented craftsmen involved."



### Dimensions



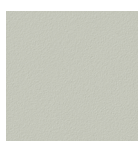
Dining Chair  
Width: 58,0 cm / 22.8"  
Depth: 57,0 cm / 22.4"  
Height: 77,0 cm / 30.3"  
Seat height: 47,8 cm / 18.8"



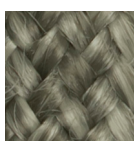
Lounge Chair  
Width: 72,5 cm / 28.5"  
Depth: 72,0 cm / 28.3"  
Height: 75,0 cm / 29.5"  
Seat height: 37,5 cm / 14.7"

### Colours

Light Grey



ALU FRAME:  
Light Grey 010



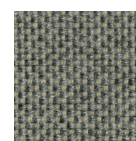
ROPE:  
Beige Brown  
8mm



SEAT:  
Teak

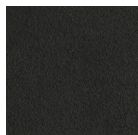


CUSHION:  
Sunbrella Sooty  
(optional)

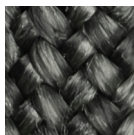


CUSHION:  
Sunbrella Carbon  
(optional)

Dark Grey



ALU FRAME:  
Dark Grey 070



ROPE:  
Dark Grey  
8 mm



SEAT:  
Teak

### Links

[Mindo 101 Collection: Lifestyle & product images](#)

[www.mindo.com](http://www.mindo.com)



## mindo 101 Chairs

Reference no.  
30017, 101017, 30054, 101054

### Materials

Powder-coated aluminium  
Teak from certified forests (untreated)

Fabric Sunbrella  
Rope

### Care & Maintenance

**ALUMINIUM** is a lightweight, yet strong and durable material and ideal for outdoor furniture due to its resistance to corrosion. All our aluminium undergoes a high-quality, solvent-free powder coating for extra protection before being processed. If the coating is damaged due to dents or scratching, moisture can invade and eventually damage the aluminium. Regularly remove dirt with a sponge or soft brush, lukewarm water, and a mild dishwashing detergent. Never use solvents. Thoroughly rinse with clean, fresh water after cleaning to remove all soap and dirt residue.

**TEAK** is a hardwood well suited for outdoor use, whether oiled or left untreated. All the teak used has not been treated and will acquire a grey patina over time. If the warm look of the teak is to be maintained, oiling with a suitable teak oil will be necessary before taking the furniture into use. The frequency required for such treatment depends on the climate the furniture is exposed to. Teak is a natural material; therefore, minor cracks and slight warping of the slats may be expected and are not a sign of inferior quality. Teak is easy to maintain as daily cleaning is simply brushing off loose dirt. Spills should be taken quickly, especially if the teak has not been treated. A mild dishwashing detergent and a soft brush or sponge in the direction of the grain will usually suffice. Always rinse the area well to remove any soap residue. Tougher stains might require light sanding. If treated previously, the treatment must be repeated after sanding the area. The teak slats can be removed and individually replaced if necessary.

**ROPE** is made from 100% solution-dyed Olyna fibers. Olyna fibers offer great, long-lived resistance to sunlight, dirt, chlorine, and sunscreen lotion due to a spinning process that adds special UV protection and antioxidants to the fabric. This high-quality material offers an unusually soft, "wool-like" surface, which is very comfortable and has strong anti-allergenic properties. We recommend frequent vacuuming or brushing off dirt/dust to avoid stains or mildew. Most dirt and stains can be cleaned off if treated promptly. The fabric can be washed with lukewarm, soapy water (<30°C/90°F). A soft bristle brush is advisable. Do not dry in electric or gas dryers, and avoid ironing the fabric. Excessive heat will shrink the fabric, we recommend air or line drying.

**FABRIC (SUNBRELLA)** is made from high-quality, 100% solution-dyed acrylic fibers produced in France. Sunbrella is designed for outdoor use and comes with a repellent surface that is hydrophobic and delays the adhesion of stains and dirt. This effect will decrease over time depending on the climatic impact. Clean with a soft bristle brush and lukewarm water/mild soapy water. Air drying is recommended to prevent mildew. We propose cleaning the cushions regularly depending on the climate; stains and dirt should be removed swiftly after they are discovered. Do not steam-iron the fabric; only use a dry iron on the lowest temperature setting, e.g., through a cloth. It is advisable to test a small area first.

### Storage

The furniture can be left outside during the entire summer season. During the off-season, we recommend storing your furniture in a dry and ventilated place, like a covered patio or similar. This will give your furniture maximum protection and make spring cleaning easier. Alternatively, store the furniture under a furniture cover. A cover should be placed in such a manner that it is kept slightly away from the furniture to minimise condensation and allow for free air circulation. Condensation forming under the cover during storage, as well as furniture or cushions that were damp before storage, can cause mould and mildew. Therefore it is vital that the furniture as well as any cushions are completely dry before storage. Checking the stored furniture regularly and letting moisture escape by lifting the cover on dry days is helpful. We recommend storing any loose cushions upright or in a slanted position for maximum air circulation. Placing them with their backside up will protect the more visible parts if staining should occur.

### Cover

mindo 101 lounge chair: Cover no. 1  
mindo 101 dining chair: place under the same cover as your table. Alternatively, place in stacks and use Cover no. 1