



mindo 101 Tables

Reference no.
30042, 30055, 30061, 30062

Product

The mindo 101 collection of chairs and tables offers sleek, modern dining with high comfort, setting the scene for special moments with family and friends. The unique insert of high-quality ceramic in the certified teak tops is not only an eye-catching design feature but serves as a practical detail for placing hot or cold items; the waterproof ceramic is ideal for extreme temperatures. The series encompasses a range of dining tables with a choice of different tops in several sizes.

Designed by

Thomas is a Danish designer with a design studio in the heart of Copenhagen. Central to Thomas' design philosophy is the interaction between a product and its user, his creative process always starts with an understanding of the user's needs. Thomas shares mindo's meticulous attention to detail and materials that are the responsible choice in terms of sustainability and longevity.

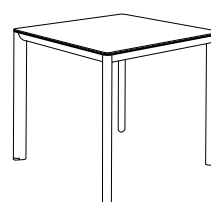
"The mindo 101 tables are designed for three chairs on each side, and still have good elbow room. I like exploring different materials together and see their interaction, like the ceramic and teak on these tables."



Dimensions



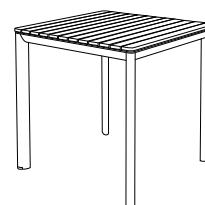
Dining table w/ceramic
Length: 222,0 cm / 87.4"
Width: 90,0 cm / 35.4"
Height: 74,0 cm / 29.1"



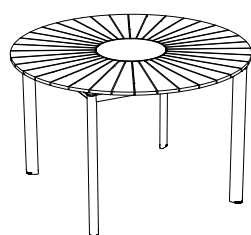
Dining table w/ceramic
Length: 74,0 cm / 29.1"
Width: 74,0 cm / 29.1"
Height: 74,0 cm / 29.1"



Dining table w/teak
Length: 222,0 cm / 87.4"
Width: 90,0 cm / 35.4"
Height: 75,0 cm / 29.5"



Dining table w/teak
Length: 74,0 cm / 29.1"
Width: 74,0 cm / 29.1"
Height: 75,0 cm / 29.5"



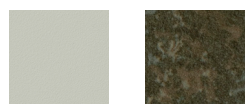
Dining table round w/teak
Diameter: 120,0 cm / 47.2"
Height: 75,7 cm / 29.8"



Café table w/teak
Length: 74,7 cm / 29.4"
Width: 74,7 cm / 29.4"
Height: 74,0 cm / 29.1"

Colours

With ceramic top



ALU FRAME: Light Grey 010
CERAMIC TOP: Steel Chrome

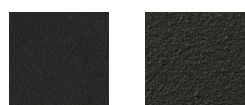
With teak/ceramic top



ALU FRAME: Light Grey 010
TOP: Teak
CERAMIC INSERT: Steel Chrome



ALU FRAME: Off-white 012
TOP: Teak
CERAMIC INSERT: Basic Neu



ALU FRAME: Dark Grey 070
CERAMIC TOP: Opium Black



ALU FRAME: Dark Grey 070
TOP: Teak
CERAMIC INSERT: Opium Black

Links

[Mindo 101 Collection: Lifestyle & product images](#)

www.mindo.com



mindodo 101 Tables

Reference no.
30042, 30055, 30061, 30062

Materials

Powder-coated aluminium
Teak from certified forests (untreated)
Ceramic

Care & Maintenance

ALUMINIUM is a lightweight, yet strong and durable material and ideal for outdoor furniture due to its resistance to corrosion. All our aluminium undergoes a high-quality, solvent-free powder coating for extra protection before being processed. If the coating is damaged due to dents or scratching, moisture can invade and eventually damage the aluminium. Regularly remove dirt with a sponge or soft brush, lukewarm water, and a mild dishwashing detergent. Never use solvents. Thoroughly rinse with clean, fresh water after cleaning to remove all soap and dirt residue.

TEAK is a hardwood well suited for outdoor use, whether oiled or left untreated. All the teak used has not been treated and will acquire a grey patina over time. If the warm look of the teak is to be maintained, oiling with a suitable teak oil will be necessary before taking the furniture into use. The frequency required for such treatment depends on the climate the furniture is exposed to. Teak is a natural material; therefore, minor cracks and slight warping of the slats may be expected and are not a sign of inferior quality. Teak is easy to maintain as daily cleaning is simply brushing off loose dirt. Spills should be taken quickly, especially if the teak has not been treated. A mild dishwashing detergent and a soft brush or sponge in the direction of the grain will usually suffice. Always rinse the area well to remove any soap residue. Tougher stains might require light sanding. If treated previously, the treatment must be repeated after sanding the area. The teak slats can be removed and individually replaced if necessary.

CERAMIC tabletops are extremely strong and almost maintenance-free, therefore ideal for outdoor use. Ceramic is made from natural and recycled raw materials. Small variations might occur on the surface which has no effect on the quantity of the product. Daily cleaning is done with a soft cloth and lukewarm water. For heavier staining, use a neutral or alkaline cleaner (never acid-based). Always rinse well after cleaning to remove all soap and dirt residue.

Storage

The tables can be left outside during the summer as well as the off-season. During the off-season, we recommend storing your furniture in a dry and ventilated place, like a covered patio or similar. This will give your furniture maximum protection and make spring cleaning easier. Alternatively, store the furniture under a furniture cover. A cover should be placed in such a manner that it is kept slightly away from the table tops to minimise condensation and allow for free air circulation. Condensation forming under the cover during storage, as well as tables that were damp before storage, can cause mould and mildew. Therefore it is vital that the table tops (especially teak) are completely dry before storage. Checking the stored furniture regularly and letting moisture escape by lifting the cover on dry days is helpful.

Cover

mindodo 101 dining table rectangular: : Cover no. 4
mindodo 101 dining table square: Cover no. 5
mindodo 101 dining table round: Cover no. 5
mindodo 101 café table: best match Cover no. 1