

mindo 100

Reference no.

30003, 30004, 30005, 30006, 30007,
30008, 30009, 30010, 30011, 30013,
30014, 30015, 30068

Product

Our popular and modular lounge group will fit in and stand out no matter the setting. The combination of the durable aluminium frame and the certified teak sides creates a warm, soft-shaped, and very exclusive look. Rounded teak slats enhance your tactile experience without encountering harsh edges. To achieve the same superior comfort as any high-quality indoor sofa, the plentiful cushions are built with layers of memory foam. Due to an inner membrane and high-quality fabrics, the cushions are weather-resistant and can be left outside even during summer showers. To create a harmonious outdoor living space, add matching coffee- and side tables. Available in warm grey or off-white.

Designed by

Thomas is a Danish designer with a design studio in the heart of Copenhagen. Central to Thomas' design philosophy is the interaction between a product and its user, his creative process always starts with an understanding of the user's needs. Thomas shares mindo's meticulous attention to detail and materials that are the responsible choice in terms of sustainability and longevity.

"My idea of good design is long-lasting, relevant, and functional products. Comfort is essential for furniture, but just as much is sustainability, both in form of choice of materials and production methods. It was important to me that the teak slats are individually replaceable, which contributes to the longevity of this lounge group."



Dimensions



Corner module
Width: 90,0 cm / 35.4"
Depth: 90,0 cm / 35.4"
Height: 64,5 cm / 25.4"
Seat height: 39,5 cm / 15.6"



Single module
Length: 83,0 cm / 32.7"
Depth: 90,0 cm / 35.4"
Height: 64,5 cm / 25.4"
Seat height: 39,5 cm / 15.6"



2-seater module (right or left)
Length: 160,0 cm / 63.0"
Depth: 90,0 cm / 35.4"
Height: 64,5 cm / 25.4"
Seat height: 39,5 cm / 15.6"



Daybed module (right or left)
Length: 160,0 cm / 63.0"
Depth: 160,0 cm / 63.0"
Height: 64,5 cm / 25.4"
Seat height: 39,5 cm / 15.6"



Double module
Length: 137,0 cm / 54.0"
Depth: 90,0 cm / 35.4"
Height: 64,5 cm / 25.4"
Seat height: 39,5 cm / 15.6"



3-seater sofa
Width: 216,0 cm / 85.0"
Depth: 90,0 cm / 35.4"
Height: 64,5 cm / 25.4"
Seat height: 39,5 cm / 15.6"



Daybed
Length: 163,0 cm / 64.0"
Depth: 160,0 cm / 63.0"
Height: 64,5 cm / 25.4"
Seat height: 39,5 cm / 15.6"



Lounge chair
Width: 86,5 cm / 34.0"
Depth: 90,0 cm / 35.4"
Height: 64,5 cm / 25.4"
Seat height: 39,5 cm / 15.6"



Coffee table - square
Length: 83,5 cm / 32.9"
Width: 83,5 cm / 32.9"
Height: 40,0 cm / 15.7"



Coffee table - round
Diameter: 58,5 cm / 23.0"
Height: 47,0 cm / 18.5"



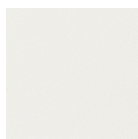
Coffee table - rectangular
Length: 83,5 cm / 32.9"
Width: 41,5 cm / 16.3"

mindo 100

Reference no.
30003, 30004, 30005, 30006, 30007,
30008, 30009, 30010, 30011, 30013,
30014, 30015, 30068

Colours

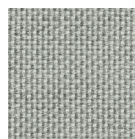
Off-white



ALU FRAME:
Off-White 012

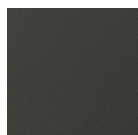


SIDES:
Teak



CUSHION:
Sunbrella
Grey Chine

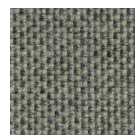
Warm Grey



ALU FRAME:
Warm Grey 011



SIDES:
Teak



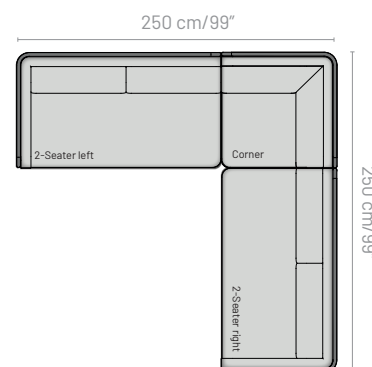
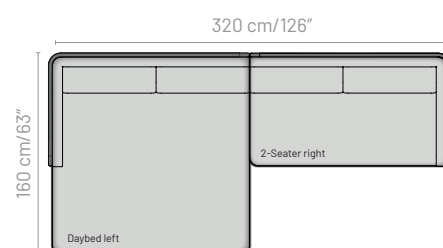
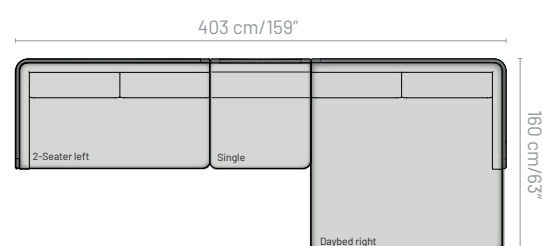
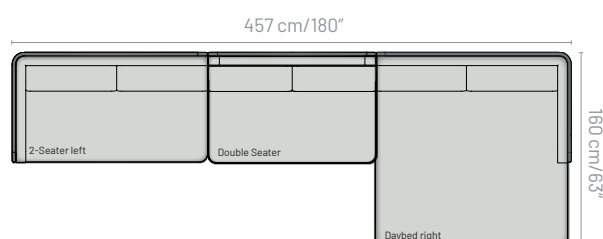
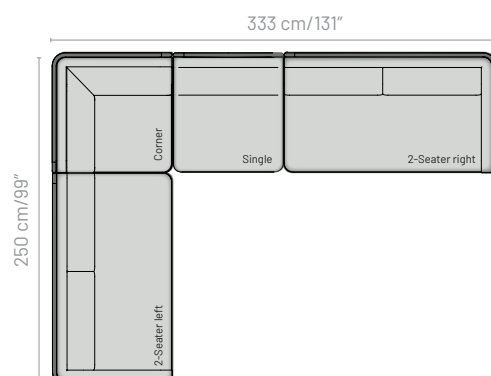
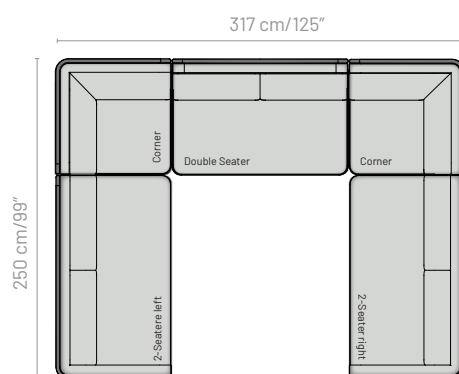
CUSHION:
Sunbrella
Carbon

Links

[Mindo 100 Collection: Lifestyle & product images](#)

www.mindo.com

Combinations



A few of the endless modular lounge combinations are shown here. Note that all combinations can be mirrored using either left or right modules, and enlarged by adding single or double modules, depending on the space available.



mindodo 100

Reference no.
30003, 30004, 30005, 30006, 30007,
30008, 30009, 30010, 30011, 30013,
30014, 30015, 30068

Materials

Powder-coated aluminium	Ceramic
Teak from certified forests (untreated)	Webbing
Fabric (Sunbrella)	

Care & Maintenance

ALUMINIUM is a lightweight, yet strong and durable material and ideal for outdoor furniture due to its resistance to corrosion. All our aluminium undergoes a high-quality, solvent-free powder coating for extra protection before being processed. If the coating is damaged due to dents or scratching, moisture can invade and eventually damage the aluminium. Regularly remove dirt with a sponge or soft brush, lukewarm water, and a mild dishwashing detergent. Never use solvents. Thoroughly rinse with clean, fresh water after cleaning to remove all soap and dirt residue.

TEAK is a hardwood well suited for outdoor use, whether oiled or left untreated. All the teak used has not been treated and will acquire a grey patina over time. If the warm look of the teak is to be maintained, oiling with a suitable teak oil will be necessary before taking the furniture into use. The frequency required for such treatment depends on the climate the furniture is exposed to. Teak is a natural material; therefore, minor cracks and slight warping of the slats may be expected and are not a sign of inferior quality. Teak is easy to maintain as daily cleaning is simply brushing off loose dirt. Spills should be taken quickly, especially if the teak has not been treated. A mild dishwashing detergent and a soft brush or sponge in the direction of the grain will usually suffice. Always rinse the area well to remove any soap residue. Tougher stains might require light sanding. If treated previously, the treatment must be repeated after sanding the area. The teak slats can be removed and individually replaced if necessary.

WEBBING is part of the construction. This strong and flexible material is manufactured in Italy from 100% solution-dyed polypropylene and rubber. We recommend regular cleaning, either vacuuming or lightly brushing off dust and dirt. Most dirt and stains will remove well if cared for promptly. For tougher stains, use a soft bristle brush, lukewarm water, and mild detergent. Rinse well after cleaning to remove all dirt and soap residue. It is important that the webbing is completely dry before covering with cushions. Air-drying is recommended.

The **FABRIC (SUNBRELLA)** is made from high-quality, 100% solution-dyed acrylic fibers produced in France. Sunbrella is designed for outdoor use and comes with a repellent surface that is hydrophobic and delays the adhesion of stains and dirt. This effect will decrease over time depending on the climatic impact. Clean with a soft bristle brush and lukewarm water/mild soapy water. Air drying is recommended to prevent mildew. We propose cleaning the cushions regularly depending on the climate; stains and dirt should be removed swiftly after they are discovered. Do not steam-iron the fabric; only use a dry iron on the lowest temperature setting, e.g., through a cloth. It is advisable to test a small area first.

CERAMIC tabletops are extremely strong and almost maintenance-free, therefore ideal for outdoor use. Ceramic is made from natural and recycled raw materials. Small variations might occur on the surface which has no effect on the quantity of the product. Daily cleaning is done with a soft cloth and lukewarm water. For heavier staining, use a neutral or alkaline cleaner (never acid-based). Always rinse well after cleaning to remove all soap and dirt residue.

Storage

The mindodo 100 lounge furniture can be left outside during the entire summer season. As the cushions are covered with weather-resistant fabric and the foam is protected with an inner membrane, even the occasional summer shower will not be a problem. During the off-season, we recommend storing your furniture in a dry and ventilated place, like a covered patio or similar. This will give your furniture maximum protection and make spring cleaning easier. Alternatively, store the furniture under a furniture cover. A cover should be placed in such a manner that it is kept slightly away from the furniture to minimise condensation and allow for free air circulation. Condensation forming under the cover during storage, as well as furniture or cushions that were damp before storage, can cause mould and mildew. Therefore it is vital that the furniture as well as any cushions are completely dry before storage. Checking the stored furniture regularly and letting moisture escape by lifting the cover on dry days is helpful. We recommend storing any loose cushions upright or in a slanted position for maximum air circulation. Placing them with their backside up will protect the more visible parts if staining should occur.

Cover

mindodo 100 corner module, single module, lounge chair: Cover no. 1
mindodo 100 daybed module left or right, daybed: Cover no. 2
mindodo 100 2-seater module left or right, double module: Cover no. 3
mindodo 100 3-seater sofa: Cover no. 8
mindodo 100 side table, coffee table: Place together with other covered furniture