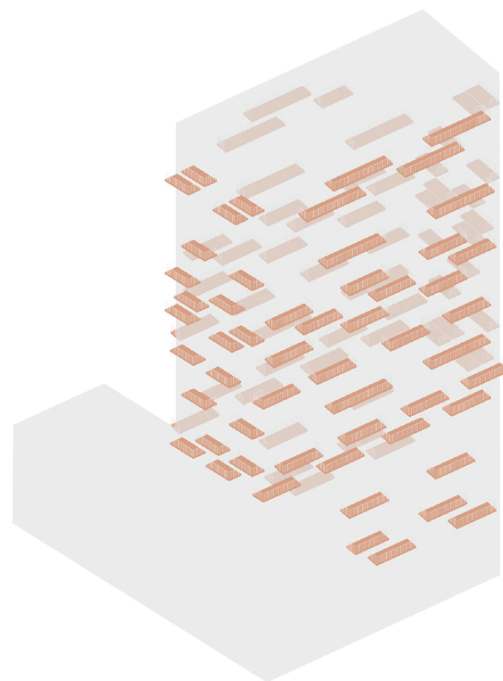
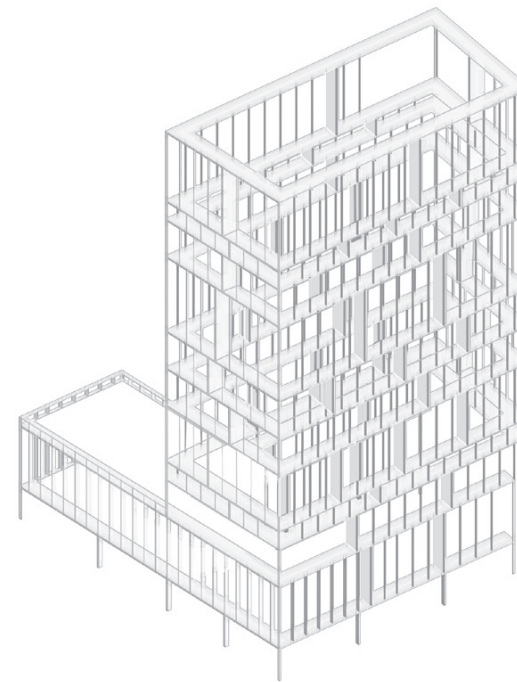


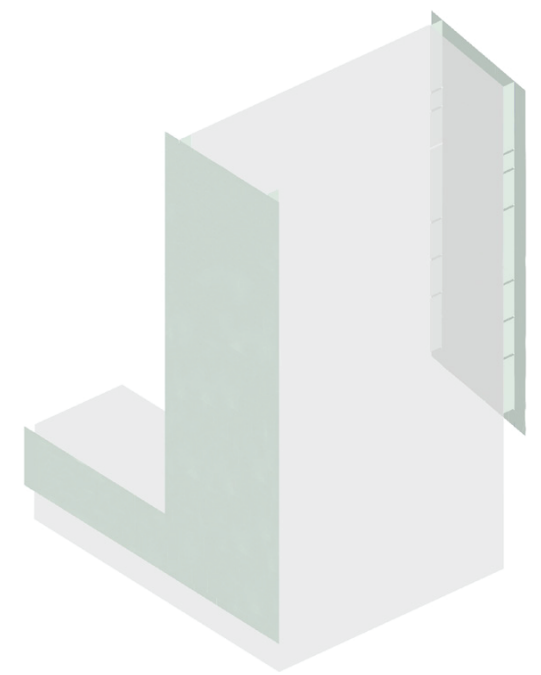
The compact volume defined by the masterplan is built up with a warm and pleasant materiality and generous window openings



Each home has a spacious terrace added to the outlined volume, and terraces are staggered to create cross-views, double-height spaces and better solar exposure



The enveloping facade-grid is a light structure defining the vertical mini-communities of various housing typologies, and mediating the scale of the tower between the urban and the human



The end gables are glazed to form enclosed, shared winter gardens and underline the verticality of the volume