

Arkitektfirmaet  
**C.F. Møller**

## ØSTERBROGADE | MEDIA KIT

DRAWINGS, PHOTOGRAPHS, FACTS AND ARCHITECTURAL DESCRIPTION





## ØSTERBROGADE 105

### ARCHITECTURAL DESCRIPTION

Østerbro is a middle-class area close to Copenhagen city centre, situated just north of the lakes which divide the medieval town from the city of the industrial age. Seen from the air, Østerbro is a typical residential district from the end of the 19th century. The area is densely built up, with large, closed blocks 5-6 storeys in height. The architectural expression is very homogenous. The surfaces are mostly of red brick, with bays in sandstone, or painted surfaces. The bays are equipped with many reliefs and curlicues, with the windows placed just a couple of centimetres inside, contributing to the typical motifs of the time. The buildings possess a certain graciousness that makes Østerbro an attractive residential area.

The development Østerbrogade 105 was constructed on one of the few vacant sites in the district, where a car dealer formerly had a multi-storey building which was not deemed worthy of preservation. In the solution of the task, it was very important to us to establish a dialogue with the distinguished surrounding buildings, one of which was designed by one of Denmark's best architects of the day, Anton Rosen.

Østerbrogade 105 is intended to be a contemporary, modern concentration of the building mass. The heavy brickwork that rounds off and concludes the block stretches along its entire length above a light glass wall which encloses the tall ground floor. The contrast of the heavy surface floating above the light, tall glass facade gives the building a touch of modernity and an unexpected base. Towards the sky, the building expresses a narrative on the classical compositional principles. Here, the building's substance is accommodated, concluding at the top in a dialogue with the neo-Renaissance attic windows of the neighbouring building, thereby creating terraces without changes in materials or a banal penthouse solution.

Into this surface, the new, modern bays are inserted like large eyes upon the world. The residents can thus step out from the surface and capture the lines of perspective of the street. The bays are serially staggered in relation to each other. Their internal architectural relations represent not just an architectural variation, but also a diagonal displacement of the plan solution within the apartments. The necessity of bringing the light from the south (i.e. the terraces) well within the bays created an unexpected dynamic between the rooms. The movements in the sloping surface culminate in the bays, while the plan is simply divided into four zones. Here you can choose for yourself where you wish to sleep and spend your waking hours.

The ground floor contains shops and cafés, and the entire complex consists of 55 rented dwellings.

The materials consist exclusively of brick, copper and glass, and the unusual detailing arose from an exemplary co-operation between the architect and the client.

#### FACTS FILE

Client	Nordea Ejendomme
Area	5700 m <sup>2</sup>
Address	Østerbrogade, Copenhagen
Year	2004-06
Collaborators	E. Pihl & Søn, COWI
Architect	Arkitektfirmaet C. F. Møller
Prizes	Nominated for the Mies van der Rohe Award 2007 Copenhagen Municipality Building Award, 2007



## C.F. MØLLER ARCHITECTS

**IN BRIEF** | C. F. Møller Architects is one of Scandinavia's oldest and largest architectural practices. Our work involves a wide range of expertise that covers programme analysis, town planning, master planning, all architectural services including landscape architecture, as well as the development and design of building components.

Simplicity, clarity and unpretentiousness, the ideals that have guided our work since the practice was established in 1924, are continually re-interpreted to suit individual projects, always site-specific and based on international trends and regional characteristics.

Over the years, we have won a large number of national and international competitions. Our work has been on show at architectural exhibitions all over the world as well as published in books and leading professional journals.

**A COMMON ARCHITECTURAL GOAL** | C. F. Møller Architects was founded by the now deceased Prof. C. F. Møller. Today the firm is a limited company, owned by nine partners: Tom Danielsen, Klavs Hyttel, Anna Maria Indrio, Lars Kirkegaard, Mads Mandrup, Mads Møller, Klaus Toustrup, Julian Weyer and Lone Wiggers. The partnership undertakes the day-to-day management and comprises the company's board of directors.

C. F. Møller Architects has a long tradition for internal and external cooperation where all parties to a project work towards a common architectural goal. Innovation and creativity are key words in our day-to-day work, and we try to make the drawing studio an attractive workplace, in which individual members of staff will find professional challenges through projects of high quality.

Our head office is in Aarhus, and besides London we have branches in Copenhagen, Vejle, Aalborg, Oslo and Stockholm, as well as a limited company in Iceland.

Read more at: [www.cfmoller.com](http://www.cfmoller.com)

## THE TEAM



314 IN TOTAL

\* 9 partnere | 17 afdelingsledere/chefer | 164 arkitekter | 2 designere | 6 landskabsarkitekter | 5 ingeniører | 32 konstruktører | 26 tekniske tegnere/assistenter | 6 konsulenter | 6 IT | 30 administration m.m. | 11 praktikanter  
9 Partners | 17 Branch Heads/Leaders | 164 Architects | 2 Industrial Designers | 6 Landscape Architects | 5 Engineers | 32 Constructing Architects | 26 Technical Illustrators/Assistants | 6 Consultants | 6 IT | 30 Administration, etc. | 11 Trainees

## NATIONALITIES



18 COUNTRIES IN TOTAL

\* 214 danskere | 41 nordmænd | 27 svenskere | 8 tyskere | 4 englændere | 3 amerikanere | 3 italienerne | 3 polakker | 2 islændinge | 1 canadier | 1 chilener | 1 finne | 1 kroat | 1 syrer | 1 franskmand | 1 iraker | 1 russier | 1 kineser  
214 Danes | 41 Norwegians | 27 Swedes | 8 Germans | 4 British | 3 Americans | 3 Italians | 3 Poles | 2 Icelanders | 1 Canadian | 1 Chilean | 1 Finn | 1 Croat | 1 Syrian | 1 French | 1 Iraqi | 1 Russian | 1 Chinese

## GENDER



46 % WOMEN • 54 % MEN

144 women | 170 men

\* status May 2008

## THE PARTNERS



Julian Weyer | Mads Mandrup | Tom Danielsen | Anna Maria Indrio | Klavs Hyttel | Lars Kirkegaard | Lone Wiggers | Mads Møller | Klaus Trøstrup

## PHOTOS BY TORBEN ESKEROD



CFM\_Osterbrogade\_Torben Eskerod\_49.tif



CFM\_Osterbrogade\_Torben Eskerod\_51.tif



CFM\_Osterbrogade\_Torben Eskerod\_01.tif



CFM\_Osterbrogade\_Torben Eskerod\_03.tif



CFM\_Osterbrogade\_Torben Eskerod\_06.tif



CFM\_Osterbrogade\_Torben Eskerod\_16.tif



CFM Osterbrogade Torben Eskerod 24.tif



CFM Osterbrogade Torben Eskerod 28.tif



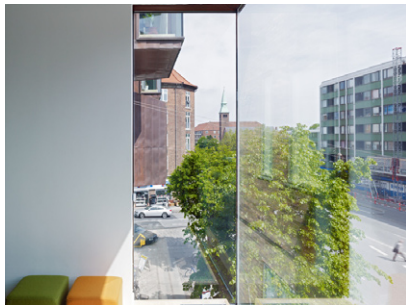
## PHOTOS BY TORBEN ESKEROD



CFM\_Osterbrogade\_Torben Eskerod\_30.tif



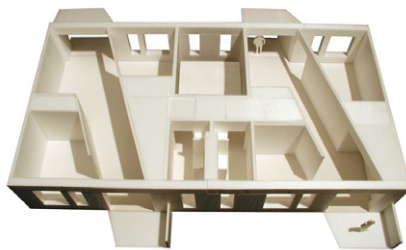
CFM\_Osterbrogade\_Torben Eskerod\_31.tif



CFM\_Osterbrogade\_Torben Eskerod\_38.tif

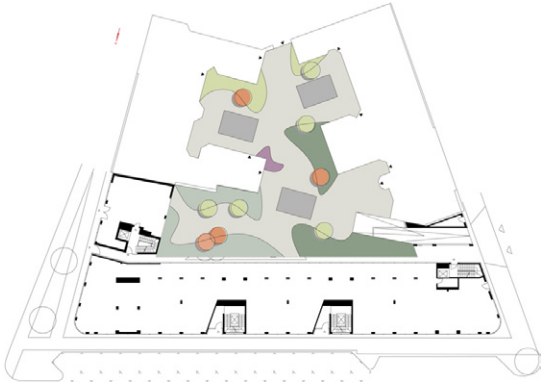


CFM\_Osterbrogade\_Torben Eskerod\_45.tif

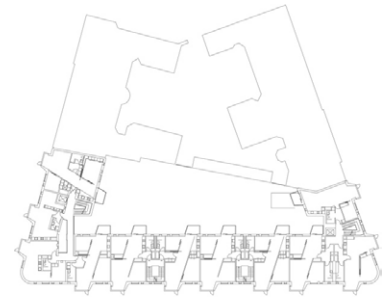


CFM\_Osterbrogade\_Model\_02.TIF

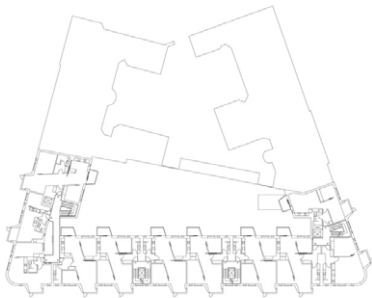
## DRAWINGS



CFM\_Osterbrogade\_Groundplan\_20.tif



CFM\_Osterbrogade\_Plan 1 floor\_30.tif



CFM\_Osterbrogade\_Plan 2 floor\_29.tif