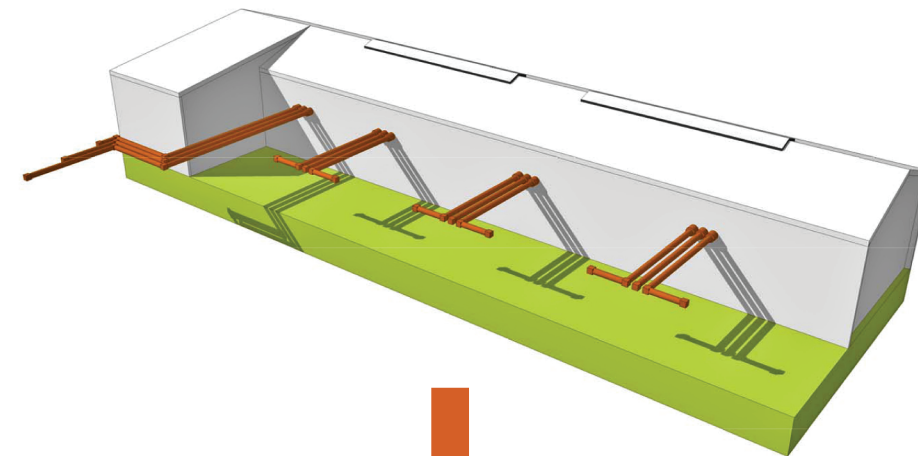
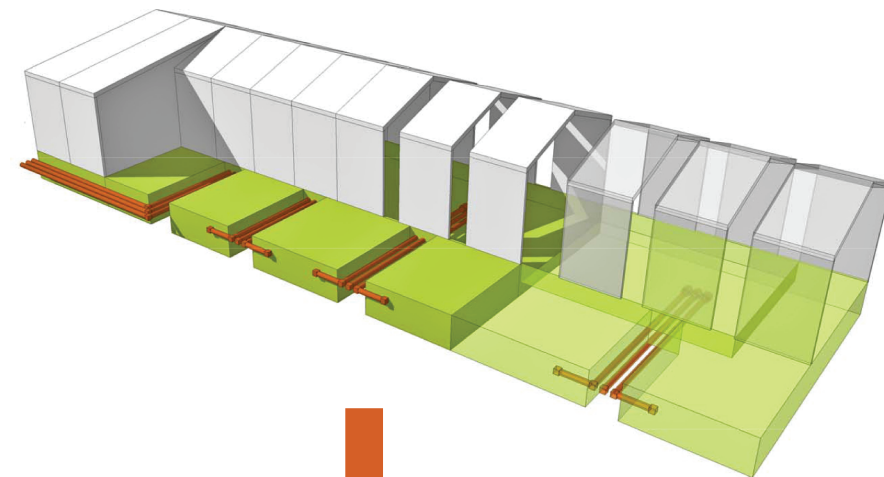


The starting point of the design is a typical contemporary solution: a standardised industrial bay with GIS connectors to the aerial cables punched through the facades.



To create better flexibility in the building concept for both varying content requirements and the option of future extensions, the bay is subdivided into a series of additive modules - basically like tranches of the same section. The GIS connectors are run in ground channels to avoid cluttering the facades.



The individual modules (or tranches) are skewed and folded, to break down the building's large monotonous volume. This creates a shifting play of daylight both inside and out, with constantly changing shadows and shapes registering the sun's trajectory.

